

Testing management tools for California weeds

Josh Davy

UC Farm Advisor

Tehama, Glenn, Colusa

What are worried about here?

- **Medusahead**



- Barb goatgrass





What's the problem?



Quick phenology

- Medusahead
 - Most seeds rapidly germinate in the fall
 - Practices that limit a single year of seed production can drastically reduce plant numbers
- Barb goatgrass
 - Half of the seeds germinate in the fall
 - Multiple years of seed reduction are necessary!

Tool box approach

- Cooperative extension's role is to help you get where you want to go, not where we think you should go
- One size does not fit all
- We test the tools
- IPM approach





Effective?

- In this case 79% mh to 3.6% mh in yr 2 after burn
- We will see how long that lasts
- 900 vs 1,800 lbs of production the next yr!



Burn for Goatgrass

- Results look promising for goatgrass seed production, but...
- Germination test of burned vs. unburned seeds
 - Burned – 0%
 - Unburned – 60%



Chemical options – 51% to 4%



Effective?

- Yes, but expensive - \$2.85/ounce @ 14 oz
- How long does it last
- Forbes
- Goatgrass
– aminocyclopyraclor



Competition options



Current work

8 sites across CA

- Blue wildrye
- Flecha fescue
- Pubescent wheatgrass
- Hardinggrass
- Berber orchardgrass
- Annual ryegrass/soft chess
- Medusahead control



Grazing strategies

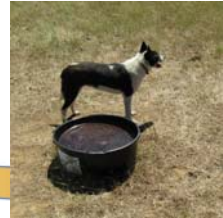
- Phenology work for proper timing
 - Use the plants late maturity against it
 - Defoliate late to reduce ability to make seed
 - Timing is critical
 - Weather, soil, etc cause variations in maturity



Grazing attraction - molasses



Effectiveness – Questionable at best

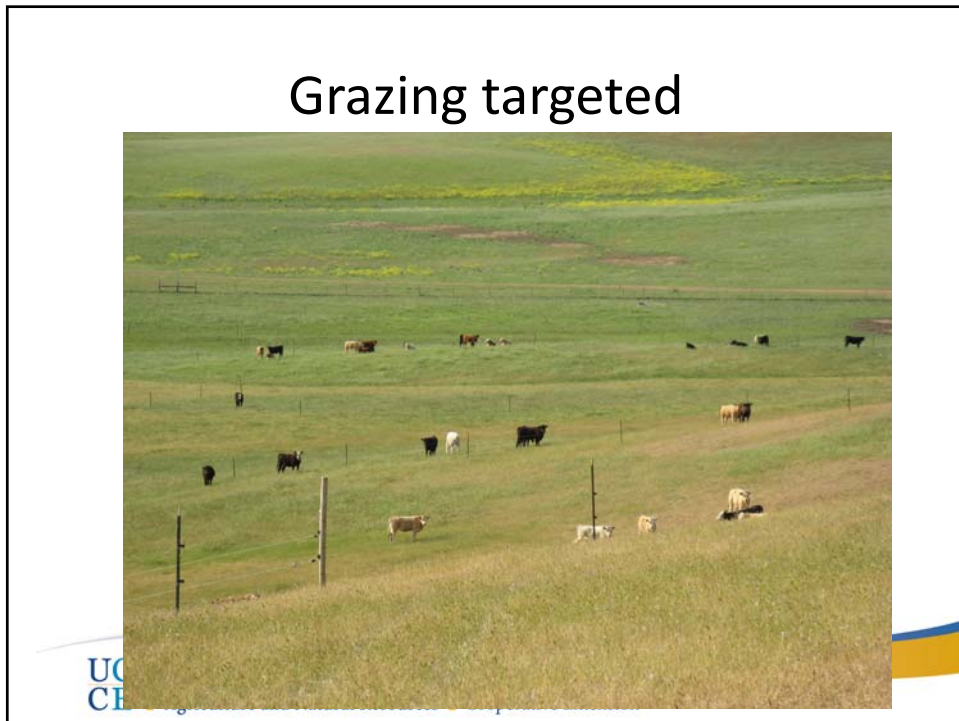
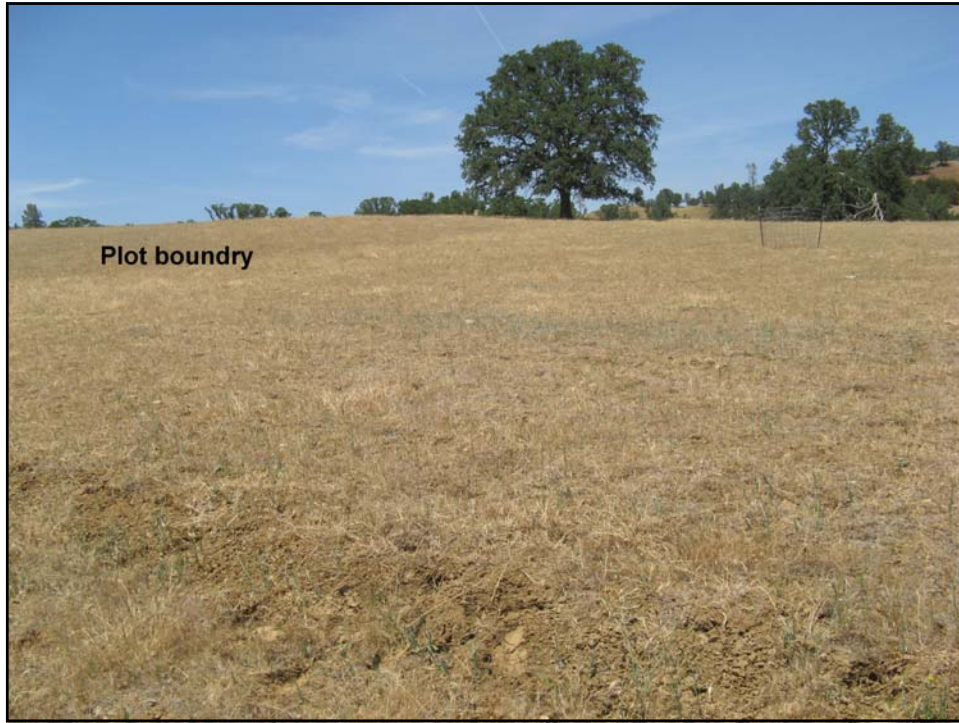


UC | University of California
CE | Agriculture and Natural Resources | Cooperative Extension

Grazing attraction - nitrogen



Cooperative Extension

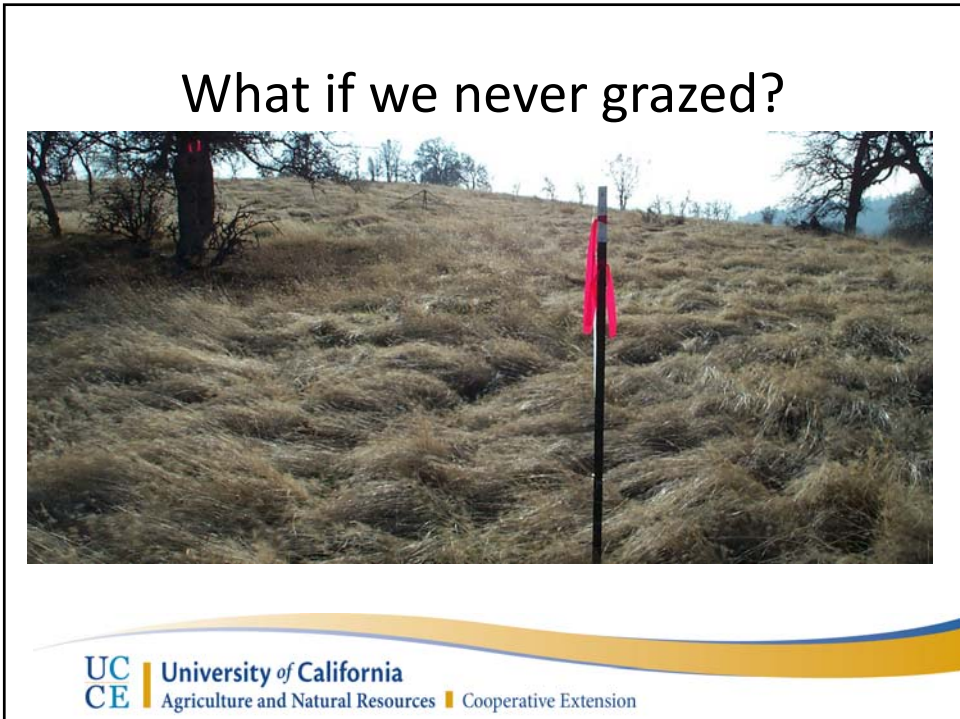


**Don't judge efficacy in a single year
Enter into grazing/weed management programs with long term goals!**



- Late rains can highly impact success
 - Ending grazing hinges on many factors such as water availability
- We were mildly successful with cattle in one year with late rain
- In Yolo they were very successful
- Mowing at heading was very successful
- SFREC grazing project – Rangeland Watershed Lab

What if we never grazed?



UC | University of California
CE | Agriculture and Natural Resources | Cooperative Extension

Still coming...

- Economics of restoration and losses associated with mh invasion
- Different grazing strategies
- More competition strategies
- Goatgrass chemical options